

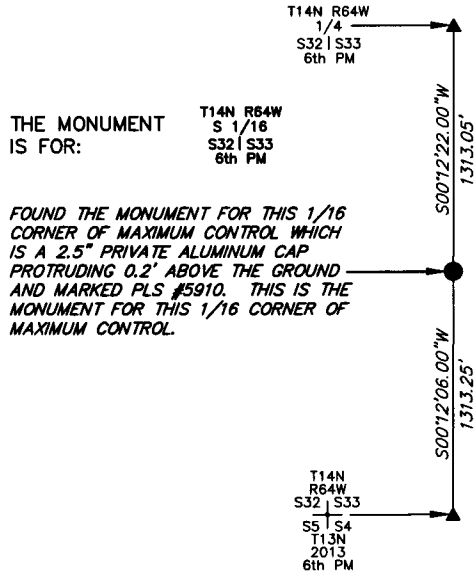
State of Wyoming Corner Record

CORNER PERPETUATION AND FILING ACT.

Regulations of the Board of Registration for Professional Engineers and Land Surveyors.)

Reverse side of this form may be used if more space is needed.

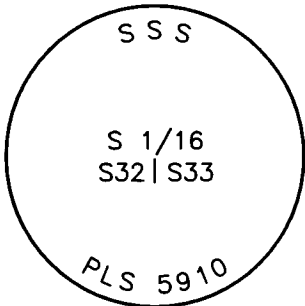
Record of original survey and citation of source of historic information (if corner is lost or obliterated). Description of corner monumentation evidence found and/or monument and accessories established to perpetuate the location of this corner. Sketch of relative location of monument, accessories, and reference points with course and distance to adjacent corner(s) (if determined in this survey). Method and rationale for reestablishment of lost or obliterated corner.



THE MONUMENT IS FOR: T14N R64W S 1/16 S32 | S33 6th PM

FOUND THE MONUMENT FOR THIS 1/16 CORNER OF MAXIMUM CONTROL WHICH IS A 2.5" PRIVATE ALUMINUM CAP PROTRUDING 0.2' ABOVE THE GROUND AND MARKED PLS #5910. THIS IS THE MONUMENT FOR THIS 1/16 CORNER OF MAXIMUM CONTROL.

NOTE: LINES SHOWN ARE BETWEEN MONUMENTS AND MAY OR MAY NOT BE SECTION OR SECTION SUBDIVISION LINES.



THE MONUMENT IS MARKED

CORNER MONUMENT SYMBOLS

- RECORD IS FOR THIS CORNER MONUMENT.
- ▲ A RELATED CORNER OR WC MONUMENT.

SCALE 1"=1000'
(EXCEPT IN TRIVIAL CASES)
BEARINGS ARE RELATED TO WGS 84 WITH GPS OBSERVATIONS
DRAWN BY: SM
P.C. D. SHANKS
COUNTY: LARAMIE



RECP #: 658200

RECORDED 4/6/2015 AT 2:29 PM BK# 2437 PG# 919
Debra K. Lathrop. CLERK OF LARAMIE COUNTY. WY PAGE 1 OF 1

Date of Field Work: 12/27/2013 Office Reference:

CROSS INDEX DIAGRAM

A	1	2	3	4	5	6	7	8	9	10	11	12	13	14	15	16	17	18	19	20	21	22	23	24	25	A
B																										B
C			6			5				4					3						2					C
D																										D
E																										E
F																										F
G			7			8				9					10						11					G
H																										H
J																										J
K																										K
L			18			17				16					15						14					L
M																										M
N																										N
O																										O
P			19			20				21					22						23					P
Q																										Q
R																										R
S																										S
T			30			29				28					27						26					T
U																										U
V																										V
W																										W
X			31			32				33					34						35					X
Y																										Y
Z																										Z

Firm/Agency, Address

UELS, LLC

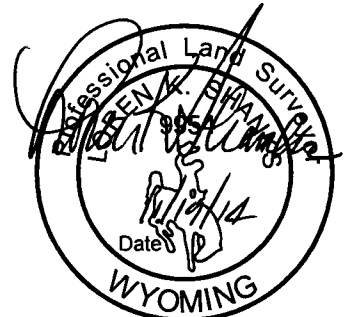
85 South 200 East

Vernal, Utah 84078

Telephone Number: 435-789-1017

This corner record was prepared by me or under my direction and supervision.

SEAL & SIGNATURE



1/16 CORNER OF MAXIMUM CONTROL
Corner Name: SOUTH 1/16 CORNER OF SECTION 32 Section: 32 T 14N R 64W ; 6TH P.M. Cross Index No.: Y-9
SBRPEPLS/PLSW: March 1994 (CLCR...SJA)